

## SBT500-2000

"SBT" SERIES SHEAR BEAM NICKEL-PLATED LOAD CELLS, from 500kg to 2000kg



Dini Argeo nickel-plated approved load cells. The measures are compatible with the main shear beam load cells present on the market. They are suitable for creating CE-M approved scales with 4 load cells or for weighing conveyors, tanks and hoppers, thanks to their accessories.

---

**CAPACITIES (kg):** 500, 1000, 2000.

---

OIML R60 approved, NTEP.

---

**Nickel-plated steel. IP67** protection.

---

Output Resistance **350 Ohm**.

---

The best solution  
for advanced industrial  
applications

## MAIN FEATURES

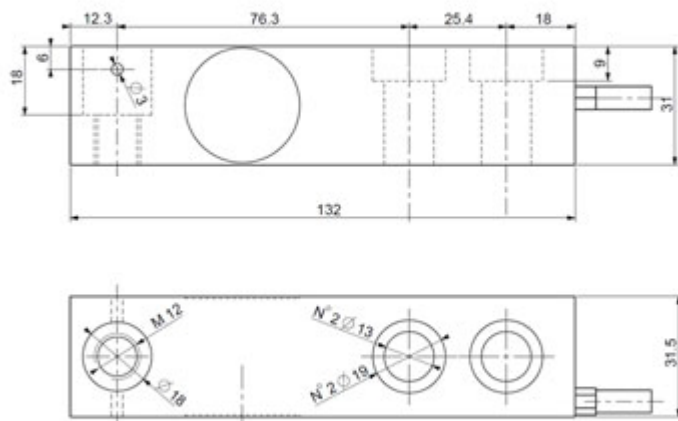
- C3 PRECISION CLASS
- NICKEL-PLATED CONSTRUCTION
- POTTED SEAL, IP67 PROTECTION
- MAX. CAPACITIES FROM 500 TO 2000 kg
- SHIELDED CONNECTION CABLE
- TEST CERTIFICATE AVAILABLE UPON REQUEST

## TECHNICAL FEATURES

- Minimum load cell verification interval  $V_{min} = E_{Max} / 10.000$
- Maximum number of verification intervals  $n_{LC} = 3000$
- Combined error 0,017% of Full Scale Output (F.S.)
- Nonlinearity  $\pm 0.02\%$  FS
- Hysteresis  $\pm 0.02\%$  FS
- Repeatability  $\pm 0.01\%$  FS
- Full Scale Output 2mV/V  $\pm 0.5\%$
- Zero balance  $\pm 1\%$  FS
- Compensated Temperature Range  $-10^{\circ}\text{C}/+50^{\circ}\text{C}$ .
- Operating Temperature Range  $-20^{\circ}\text{C}/+60^{\circ}\text{C}$ .
- Creep error after 30 minutes  $<0,02\%$  F.S.
- Maximum tolerated excitation voltage 15 Vdc
- Input Resistance  $380 \pm 20$  Ohm
- Output Resistance  $350 \pm 5$  Ohm
- Insulation Resistance  $>5000$  MOhm
- Safe Overload 120% F.S.
- Ultimate Overload 300% F.S.
- 6-wire shielded cable, 3.5m long, 5 mm diameter

## DIMENSIONS - DECODING STANDARD CABLE

- NOTE: dimensions in mm






- Decoding of the standard cable colours

Colour	Function
--	SHIELD
YELLOW	OUTPUT +
GREY	SENSE +
BROWN	INPUT +
WHITE	OUTPUT -
GREEN	INPUT -
PINK	SENSE -

## VERSIONS

### Available versions

Codice	Max (kg)
SBT500 	500
SBT1000 	1000
SBT2000 	2000



[www.diniargeo.com](http://www.diniargeo.com)



“YOUR WORLDWIDE PARTNER FOR WEIGHING”

DINI ARGEO  
FRANCE sarl  
France

DINI ARGEO  
GMBH  
Germany

DINI ARGEO  
UK Ltd  
United Kingdom

DINI ARGEO WEIGHING  
INSTRUMENTS Ltd  
China

DINI ARGEO  
OCEANIA  
Australia



**COMPANY HEADQUARTERS**

Via Della Fisica, 20  
41042 Spezzano di Fiorano Modena • Italy  
Tel. +39.0536 843418

**SERVICE ASSISTANCE**

Via Dell'Elettronica, 15  
41042 Spezzano di Fiorano Modena • Italy  
Tel. +39.0536 921784



SALES AND TECHNICAL ASSISTANCE SERVICE