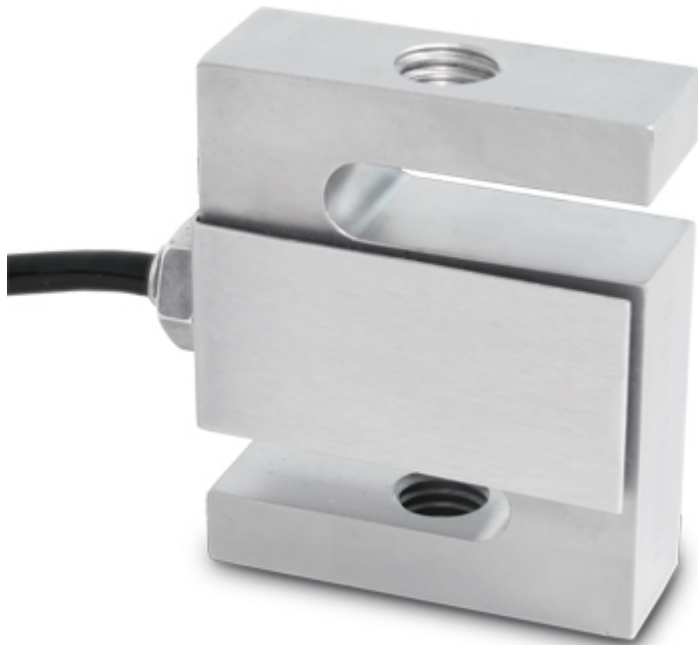


## STG

### STG SERIES TENSION LOAD CELLS



Tension or Compression approved load cells for the weighing hoppers, tanks, scales with levers, and with other weighing devices.

---

**CAPACITIES (kg):** 100, 500, 1000.

---

**OIML R60. C3** precision class.

---

**17-4 PH stainless steel. IP67** protection.

---

The best solution  
for advanced industrial  
applications

## MAIN FEATURES

- C3 PRECISION CLASS
- 17-4 PH STAINLESS STEEL CONSTRUCTION
- IP67 PROTECTION
- MAX. CAPACITIES FROM 100 TO 1000 kg
- SHIELDED CONNECTION CABLE
- TEST CERTIFICATE AVAILABLE UPON REQUEST

## TECHNICAL FEATURES

- Minimum load cell verification interval:  
 $V_{min} = E_{Max} / 10.000$  (for STG500 and STG1000 model);  
 $V_{min} = E_{Max} / 7.000$  (for STG100 model)
- Maximum number of verification intervals:  $n_{LC} = 3000$
- Combined error 0,03% of Full Scale Output (F.S.)
- Non-Repeatability: 0,01% F.S.
- Full Scale Output: 3mV/V +/- 0,08%
- Temperature effect on zero: 0,017% /°C
- Temperature effect on full scale output: 0,014% /°C
- Compensated Temperature Range: -10°C/+40°C
- Operating Temperature Range: -35°C/+65°C
- Creep error after 30 minutes: 0,02% F.S.
- Maximum tolerated excitation voltage: 18 VDC
- Input Resistance:  $430 \pm 60$  Ohm
- Output Resistance:  $350 \pm 3.5$  Ohm
- Zero balance: +/-1% F.S.
- Insulation Resistance: >5000 MOhm
- Safe Overload: 150% F.S.
- Ultimate Overload: 300% F.S.
- 4-wire shielded cable, 6m long, 5 mm diameter

- | <u>Wiring Code</u> |                 |
|--------------------|-----------------|
| <u>Colour</u>      | <u>Function</u> |
| RED                | INPUT +         |
| BLACK              | INPUT -         |
| GREEN              | OUTPUT +        |
| WHITE              | OUTPUT -        |
| METAL              | SHIELD          |

## DETAIL 1



## VERSIONS

### Available versions

Codice		Max (kg)
STG100		100
STG500		500
STG1000		1000



“YOUR WORLDWIDE PARTNER FOR WEIGHING”

DINI ARGEO  
FRANCE sarl  
France

DINI ARGEO  
GMBH  
Germany

DINI ARGEO  
UK Ltd  
United Kingdom

DINI ARGEO WEIGHING  
INSTRUMENTS Ltd  
China

DINI ARGEO  
OCEANIA  
Australia



**COMPANY HEADQUARTERS**

Via Della Fisica, 20  
41042 Spezzano di Fiorano Modena • Italy  
Tel. +39.0536 843418

**SERVICE ASSISTANCE**

Via Dell'Elettronica, 15  
41042 Spezzano di Fiorano Modena • Italy  
Tel. +39.0536 921784



SALES AND TECHNICAL ASSISTANCE SERVICE