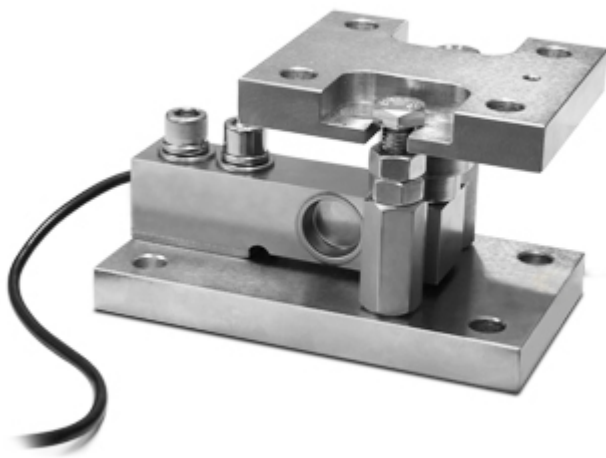


## KSBC2

Nickel-plated kit "KSBC" series, for shear beam SBT/SBK/SBX load cells



Mounting kit for shear beam load cells SBT/SBK/SBX series, up to 2.500kg. Suitable for weighing of hoppers, tanks, platforms, etc.

**ADVANTAGES:**

- Nickel-plated construction
- Higher plate with spherical joint, for optimal weighing precision
- Anti-overflow
- Locking/bypass system for facilitated transport and maintenance
- Quick installation/removal of the load cell (even if full- loaded)

**The best solution  
for advanced industrial  
applications**

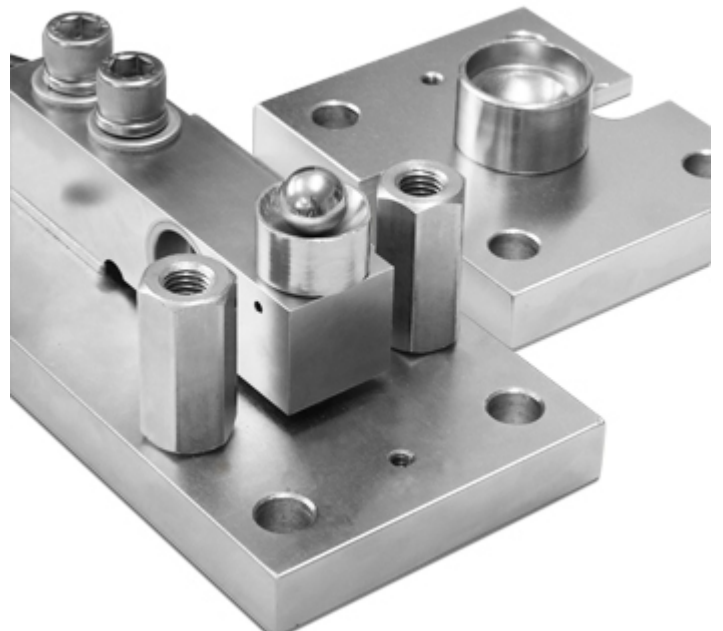
## LOAD CELLS KIT: TECHNICAL FEATURES

- For shear-beam load cells, SBT/SBK/SBX series, from 300 to 2500 kg
- Nickel-plated manufacturing
- Self-centering spherical joint, for precise weighing
- Locking system for cell protection during transport or maintenance of the structure
- Limit nuts and screws, adjustable
- Anti-overturn (within the limits declared)

### DETAIL 1



### DETAIL 2



**DETAIL 3**





“YOUR WORLDWIDE PARTNER FOR WEIGHING,”

DINI ARGEO  
FRANCE sarl  
France

DINI ARGEO  
GMBH  
Germany

DINI ARGEO  
UK Ltd  
United Kingdom

DINI ARGEO WEIGHING  
INSTRUMENTS Ltd  
China

DINI ARGEO  
OCEANIA  
Australia



**COMPANY HEADQUARTERS**

Via Della Fisica, 20  
41042 Spezzano di Fiorano Modena • Italy  
Tel. +39.0536 843418

**SERVICE ASSISTANCE**

Via Dell'Elettronica, 15  
41042 Spezzano di Fiorano Modena • Italy  
Tel. +39.0536 921784

SALES AND TECHNICAL ASSISTANCE SERVICE