

# Type BM14K Load Cell



## Short description



- Stainless steel IP68 compression load cell
- Hermetically sealed
- Suitable for hopper scales and vehicle testing facilities
- Built in surge arrestors



Test certificate no. D09-07.02 Revision 1  
C of C no R60/2000-NL1-10.10



Certificate no. 10-087

## Available models

Capacity	Accuracy	Full article description
10t	C3	BM14K-C3-10t-12B6-W1
15t	C3	BM14K-C3-15t-12B6-W1
20t	C3	BM14K-C3-20t-12B6-W1
30t	C3	BM14K-C3-30t-12B6-W1
40t	C3	BM14K-C3-40t-20B6-W1
50t	C3	BM14K-C3-50t-20B6-W1
60t	C3	BM14K-C3-60t-20B6-W1
100t	C3	BM14K-C3-100t-20B6-W1

Specifications and dimensions are subject to change without notice and do not constitute any liability whatsoever.

# Type BM14K Load Cell

## Technical specifications BM14K

Accuracy class		OIML R60 C3		
Output sensitivity ( = FS )	mV/V	2.0 ± 0.002		
Maximum capacity ( E <sub>max</sub> )	t	10, 15, 20, 30, 40, 50	60, 100	
Max. number of load cell intervals	n <sub>LC</sub>	3000		
Ratio of min. LC verification interval	$Y = E_{max} / v_{min}$	7000	9000	
Combined Error	%FS	≤± 0.020		
Minimum dead load	Of E <sub>max</sub>	0%		
Safe overload	of E <sub>max</sub>	150 %		
Ultimate overload	of E <sub>max</sub>	300 %		
Zero balance	of FS	< ± 1.0 %		
Excitation, recommended voltage	V	5 ~ 12		
Excitation maximum	V	18		
Input resistance	Ω	700 ± 7		
Output resistance	Ω	703 ± 4		
Insulation resistance	MΩ	≥5000 ( at 50VDC )		
Compensated temperature	°C	-10 ~ +40		
Operating temperature	°C	-35 ~ +65		
Storage temperature	°C	-40 ~ +70		
Element material		Stainless steel		
Ingress Protection (acc. to EN 60529)		IP68		
Recommended torque on fixation	Nm	-		
ATEX classification (optional)		II1G Ex ia II1C T4	II1D Ex iaD 20 T73°C	II3G nL IIC T4

## Wiring

### Features:

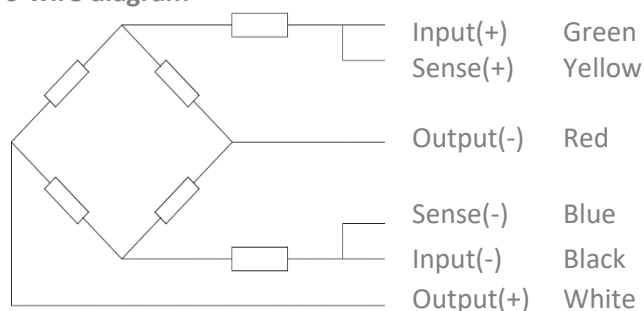
shielded, 6 conductor cable

Cable diameter: Ø5mm

Standard cable length for 10t – 30t: 12m and for 40t – 100t: 20m

Shield not connected to element

### 6-wire diagram

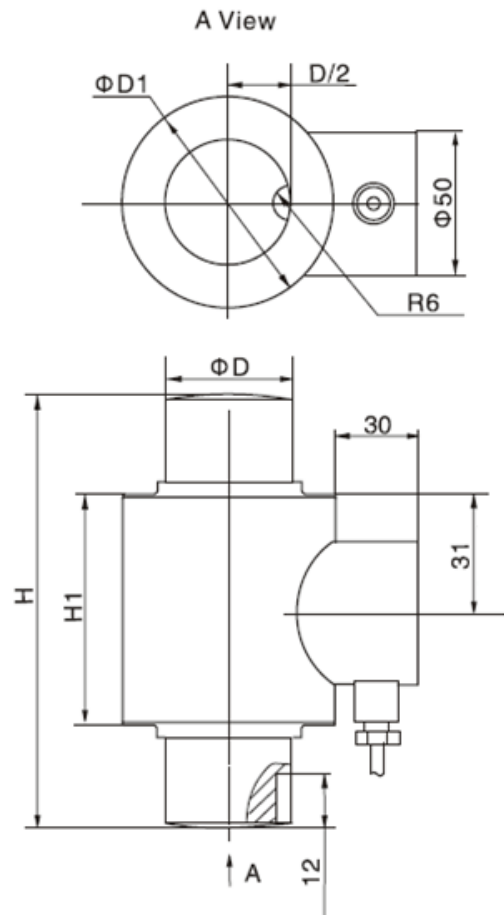


Specifications and dimensions are subject to change without notice and do not constitute any liability whatsoever.

# Type BM14K Load Cell

Dimensions in mm

Dimension Capacity	H	H1	ØD	ØD1
10t, 15t	130	80	44	74
20t – 40t	150	92	44	74
50t, 60t	210	92	44	74
100t	260	121	64	93



## Available accessories

### BY-14-109-10-100t rocker support

- 1 piece, top, with mounting holes
- 1 piece, bottom, with mounting holes
- Stainless steel
- Anti-rotation pin in the bottom base



Specifications and dimensions are subject to change without notice and do not constitute any liability whatsoever.