



## Short Description



- Alloy steel eye bolt
- Easy installation
- Can be used with load cell models: H3, H3G, B3G and BM3\*

## Available Models

Model	Capacity	Full Article Description	Part Number
HL-3-002	25kg – 50kg	HL-3-002-25/50kg-LM M8x16	20300480
HL-3-002	100kg – 150kg	HL-3-002-100/150kg-LM M10x20	20300500
HL-3-002	200kg – 300kg	HL-3-002-200/300kg-LM M12	20300510
HL-3-002	500kg – 750kg	HL-3-002-500/750kg-LM M12x1.75	20300400
HL-3-002	1t – 1.5t	HL-3-002-1/1.5t-LM M12x1.75	20300410
HL-3-002	2t – 3t	HL-3-002-2/3t-LM M20x1.5x32	20300420
HL-3-002	5t	HL-3-002-5t-LM M20x1.5x35	20300430

## Technical specifications HL-3-002

Capacity	25 – 50kg	100 – 150kg	200 – 300kg	500 – 700kg	1 – 1.5t	2 – 3t	5t
Maximum static lifting load	0.16t	0.25t	0.4t	0.7t	1.2t	3.0t	6.3t

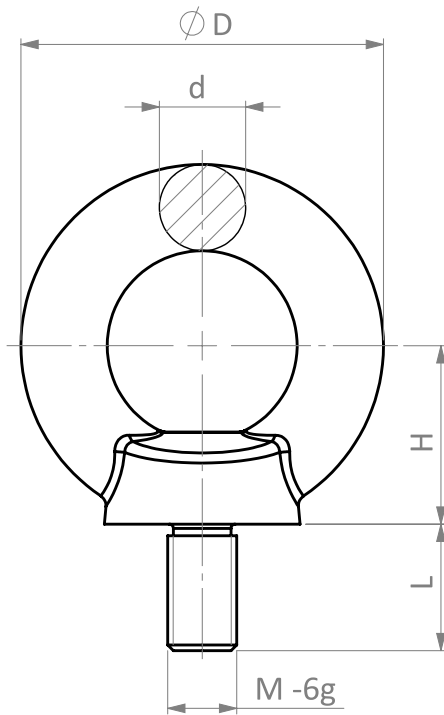
**Note:** Expressed maximum forces refer to this eye bolt, without load cell installed.

\* Please note the 5t version is not suitable for the 5t BM3, as the threading doesn't fit. It is suitable for the 4t BM3.

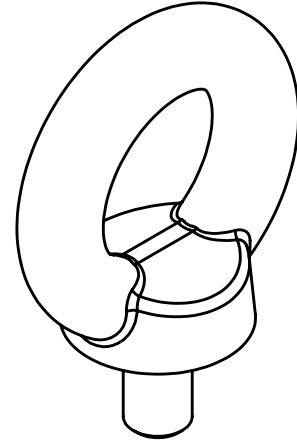
Specifications and dimensions are subject to change without notice and do not constitute any liability whatsoever.

## Dimensions in mm

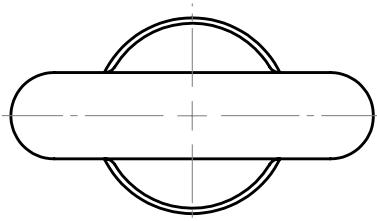
Front View



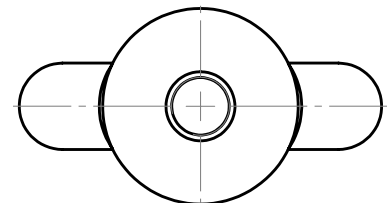
Isometric View



Top View



Bottom View



Capacity \ Dimension	D	d	H	Ø Hole	M × Pitch × L
25 – 50kg	36	8.1	19	18	M8 × 1.25 × 16
100 – 150kg	45	10.6	22	22	M10 × 1.5 × 20
200 – 300kg	54	12.5	26	27	M12 × 1.75 × 22
500 – 750kg	63	15.2	31	31	M12 × 1.75 × 22
1t – 1.5t	72	17.4	36	38	M12 × 1.75 × 22
2t – 3t	102	25.7	53	52	M20 × 1.5 × 32
5t	123	30	63	63	M20 × 1.5 × 35

Specifications and dimensions are subject to change without notice and do not constitute any liability whatsoever.